

# Angular Contact Ball Bearings

Bearing No. : **NACHI 7201**

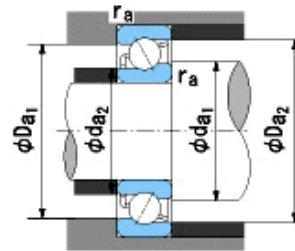
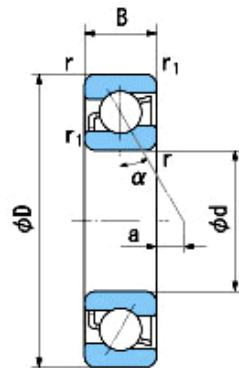
■ Bearing Type

■ Clearance

■ Tolerance Class

## Dimensions

d = 12<sup>0</sup><sub>-0.008</sub>  
 D = 32<sup>0</sup><sub>-0.011</sub>  
 B = 10<sup>0</sup><sub>-0.120</sub>  
 r = 0.6~1  
 (Radial Direction)  
 r = 0.6~2  
 (Axial Direction)  
 r1 = 0.3~0.6  
 (Radial Direction)  
 r1 = 0.3~1  
 (Axial Direction)  
 a = 1.4



## Dimensions

da1(min) = 17  
 da2(min) = 14  
 Da1(max) = 27  
 Da2(max) = 29.4  
 ra(max) = 0.6  
 ra1(max) = 0.3  
 Mass = 0.04 kg

Basic Dynamic Load Rating Cr : **7,600** N

Basic Static Load Rating Cor : **3,960** N

Limiting Speed ;

Grease Lubrication : **20,000** min<sup>-1</sup>

Oil Lubrication : **27,000** min<sup>-1</sup>

O.D.Surface Runout with Side :

Axial Runout with Bore :

Axial Runout with Raceway :

Width Variation :

Radial Runout :

INNER RING

OUTER RING

O.D.Surface Runout with Side :	-	-
Axial Runout with Bore :	-	-
Axial Runout with Raceway :	-	-
Width Variation :	<b>0.020</b>	<b>0.020</b>
Radial Runout :	<b>0.010</b>	<b>0.020</b>